

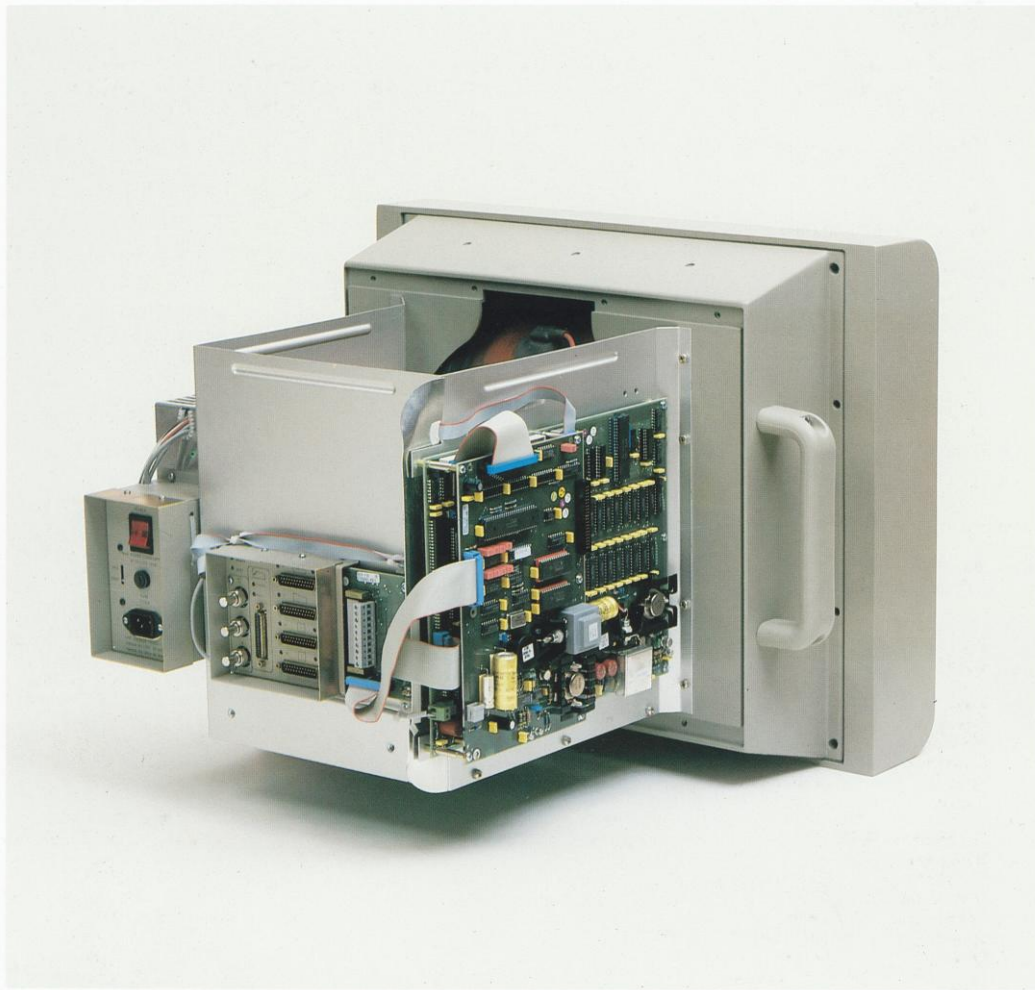
# TESSELATOR 7850/7855



870311

The color graphic system for your process

**ABB**  
ASEA BROWN BOVERI



870312

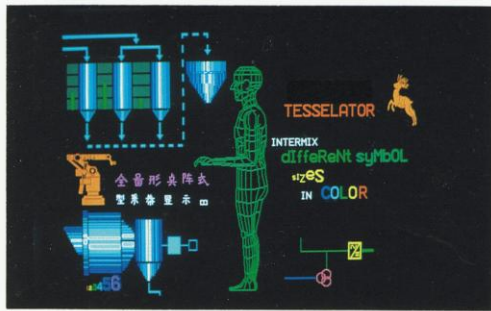
## Control close to the process

The ABB Tesselator is now moving outside the control room, to get closer to the process. With ABB Tesselator your process supervision becomes more flexible and efficient. The Tesselator 7850/7855 stand alone unit is cost effectively used in two ways. Firstly, locally connected to your process control computer. Secondly, remotely connected if so demanded by your process control strategy.

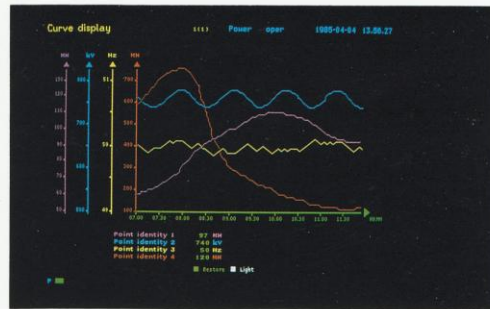
In both cases the ABB Tesselator gives you improved control, increased reliability and the best ergonomics. Simplicity, speed and reliability are the hallmarks of the entire Tesselator concept. It even starts at installation. No video amplification and no coaxial cables are required. All communication is asynchronous. Simplicity, speed and reliability continue.

### Hardware

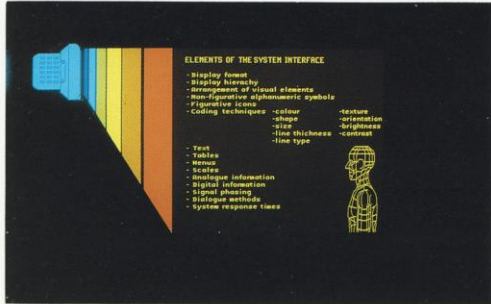
In the ABB Tesselator 7850/7855 stand alone unit, high technology is combined with simple mechanical design. This gives you extremely high reliability, simple installation and decreased life cycle cost.



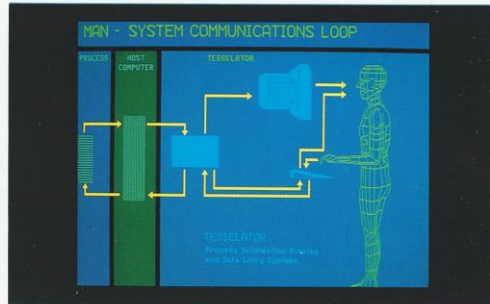
870313



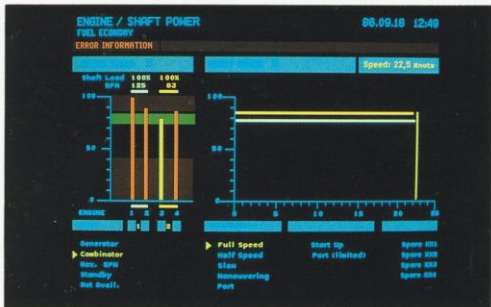
870314



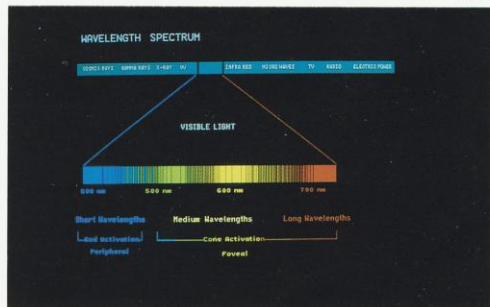
870315



870316



870317



870318

## Visible advantages

The Tesselator 7850/7855 gives a good picture of your reality. It describes and visualises your process in a way no other display system can.

### Simplicity

It normally takes a long time to design process pictures. Several months is not unusual. Tesselator has considerably reduced the time it takes to compose or to alter a picture. This is done directly from the keyboard with a number of editing functions and, with immediate feedback of the result on the screen.

The Tesselator 7850/7855 offers you almost limitless possibilities to create your pictures.

### Speed

The picture is made up of symbols. As opposed to other systems each symbol, regardless of size and shape, is represented by one single code. This means that Tesselator pictures require much less space in your host computer. The amount of data to be transmitted is greatly reduced and you therefore obtain faster communication between the host computer and the display system.

Static pictures are stored locally in the system and this gives an even shorter response time.

### Reliability

Production stops and disturbances in the process are extremely expensive. Great demands are therefore placed on the operator and the supervision system and specifically the interplay between man and machine. The ABB Tesselator together with the operator gives the greatest possible reliability in your process control system.



870402

## Paint your own process

With the Tesselator 7850/7855 you have the ability to creating an accurate and clear representation of your process. You have plenty of building blocks. Different text and symbol sizes, blink functions, display of dynamic information in the form of trend curves, histograms, bargraphs, the opportunity to rapidly change from overall to detailed pictures etc. You have an entire "paintbox" at your disposal. You can paint with the correct colors which arise in the process. The paintbox contains a palette with 512 different colors.

You can choose 16 different foreground and 8 local background colors. With your Tesselator it will be easier to recognize the different parts of the process. It will become easier to supervise and control. High readability is ergonomically sound. The process pictures in the ABB Tesselator are clear and lucid. ABB Tesselator – the very best process supervision with a reliability which gives higher productivity and security.

### Functions

- Four writing directions
- Five symbol sizes

- 64 background colors with two intensities
- 8 local background colors
- 16 foreground colors (512 colors to choose from)
- Four blink functions
- Various line thickness
- Trend graphs
- Histograms and bargraphs
- Hardcopy (Tesselator 7855)
- Menu handling
- Communication parameters set via the keyboard
- Local display storage
- Scroll (also in window)
- Plus a number of functions to simplify display design

## Data

### Input power

90-138 VAC, 45-65 Hz  
184-265 VAC, 45-65 Hz

### Power consumption

Max 130 W

### Processor

Motorola 68008, 10 MHz

### Communications

Asynchronous: Point-to-point  
2 channels  
Tesselator 7850  
3 channels  
Tesselator 7855

### Tesselator 7850/7855

Computer  
Data link: RS 232C (V.24) or  
KM-1 modem

Max distance: 15 m (RS 232C)  
900 m (KM-1) at  
9.6 kbit/s

Data format: 8 bits  
Selectable speeds: 1200, 2400,  
4800, 9600 and  
19200 bits/s  
Parity: Odd, even or none  
Data link protocol: ADLP-10

Keyboard  
Data link: RS 232C (V.24)  
Max distance: 15 m  
Data format: 8 bits  
Speed: 4800 bits/s  
Parity: Even

### Tesselator 7855

Hardcopy  
Data link: RS 232C (V.24)  
Max. distance: 15 m  
Data format: 8 bits  
Speed: 9600 bits/s  
Parity: None

### CRT

Size: 20"  
Gun: In-line  
Dot pitch: 0,31 mm

### VDU controller

Based on custom LSI

### Picture data

Size: 350 × 262 mm  
Tessel: 112 × 240  
(vertical × horizontal)  
Pixel: 336 × 720  
(vertical × horizontal)  
Characters: Up to 56 lines ×  
120 columns

### Frame rate

50, 60 or 61 Hz,  
non interlaced

### External monitor

Video signals: RS 170, RGB  
Negative sync.  
Max distance: 50 m, 150 ft

### Colors and blink

A choice of two formats via menu  
handling:

- 16 foreground colors  
1 blink function (on/off)  
8 local background colors
- 16 foreground colors  
3 blink functions  
4 local background colors

### Foreground colors

- Selected via menu handling from  
a palette of 512 colors.

### Blink functions

- Rapid, non symmetric and two-  
color blink.  
- Each foreground color can be  
defined with multi-phase blink.

### Local background colors

- Selected via menu handling from  
a palette of 512 colors.

### General background colors

- 64 colors with two intensities.

### Cursors

Two independent cursors, visible  
and computer cursor.

### Analog pictures

Up to 16 trend graphs and an  
unlimited number of analog indicators  
(bargraphs type) can be shown  
simultaneously.

### Symbols

Up to 896 symbols.  
Customer defined symbols are  
possible.  
Standard symbol set:  
- 5 sizes of alphanumerical  
characters  
Various language versions  
available  
- 3 sizes of industrial/electrical  
symbols

### Local display storage

Up to 100 pictures can be stored in a  
90 kbyte RWM.

### Dim function

To reduce the light intensity on the  
screen (50%).

### Fields

Unlimited number of computer and  
operator fields.

### Area protection

Any area on the screen can be  
protected.

### Dimensions

Size (W × H × D): 540 × 450 × 542  
mm  
Weight: 30 kg

### Environmental data

Temperatures,  
operating: +5 to +40° C  
storage: -40 to +55° C  
Relative humidity: 10 - 80%

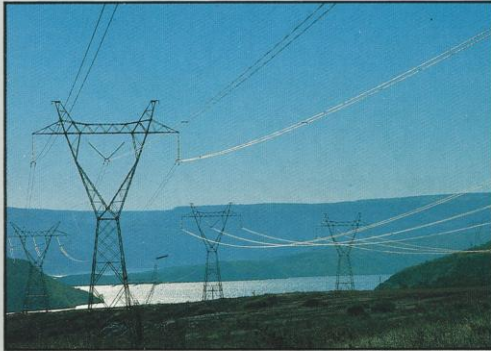
### MTBF

Picture tube: 15.000 hours at  
zero beam cur-  
rent (dark picture),  
cathode current  
and high  
voltage on  
30.000 hours at  
50° C  
Electronics:

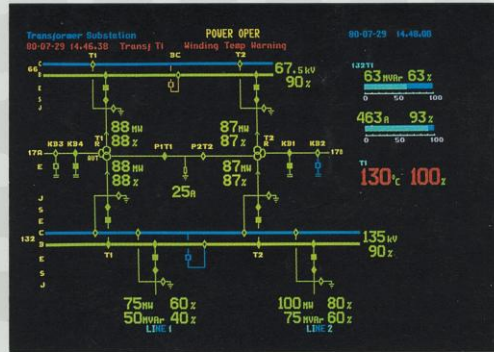
### Peripheral equipment

Keyboard: DSIH 70, display  
design keyboard  
Keyboard: DSIH 70F,  
operators keyboard  
Keyboard: DSIH 90,  
customer  
programmable  
keyboard  
Trackball: DSIH 71  
Hardcopy: DSEP 4544, 7 color  
(4 ribboned)  
or other types with  
JX80 protocol  
(Tesselator 7855)  
Monitor: DSIM 2619, 16"  
Monitor: DSIM 2919, 20"

# ABB Tesselator is your process window



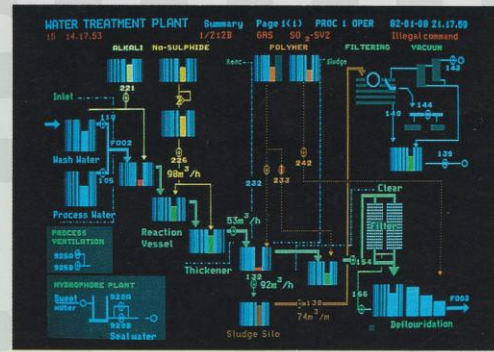
88611



800752



840177



870272

The ABB Tesselator is used in many different applications e.g.

- Power
- Chemical
- Refinery
- Furnace control
- Industry control, food
- Industry control, steel
- Railroad power distribution
- Gauging control
- Power and gas distribution
- Distributed process control
- Water treatment
- Paper mill production control
- Mining industry
- Marine and offshore

**ABB**  
ASEA BROWN BOVERI

Asea Brown Boveri is a world leader in electrical engineering comprising 200 000 employees, some 800 companies operating in 140 countries. The main business segments are power plants, power transmission, power distribution and industrial equipment. Access to modern control and supervision systems like ABB Master is of strategic importance to the group in deliveries to customers in these segments.

Business area ABB Process Automation, which belongs to the industrial equipment segment, designs, manufactures and markets ABB Master as well as systems for industrial force measurement and complete electrical equipment for industrial plants.

**Argentina** Buenos Aires Tel. 311.5386/311.7307/311.1693, Telefax 1 111 952 **Australia** Melbourne Tel. 03-735 72 22, Telefax 03-735 31 87 **Austria** Vienna Tel. 0222-601 09, Telefax 0222-604 37 25 **Belgium** Brussels Tel. 02-721 20 31, Telefax 02-721 44 28 **Brazil** Sao Paulo Tel. 011-577 89 44, Telefax 011-579 73 38 **Canada** Montreal Tel. 514-332 53 50, Telefax 514-332 06 09 **China** Beijing Tel. 1-500 44 41, Telefax 1-500 31 17 **Denmark** Odense Tel. 66-14 70 08, Telefax 66-12 09 89 **Bolnisi** Tel. 42-97 22 44, Telefax 42-97 60 44 **Finland** Helsinki Tel. 90-50691 Telefax 90-506 92 69 **France** Villefranche/Saone Cedex Tel. 74-62 28 92, Telefax 74-62 28 41 **Federal Republic of Germany (FRG)** Mannheim Tel. 0621-388 01, Telefax 0621-388 25 01, Düsseldorf Tel. 0211-500 70, Telefax 0211-500 71 11 **India** Bangalore Tel. 0812-39 41 72/39 51 81, Telefax 0812-74 1 47 **Italy** Milan Tel. 02-26 23 21, Telefax 02-26 23 26 44 **Japan** Tokyo Tel. 03-436 62 21, Telefax 03-436 63 23 **Malaysia** Kuala Lumpur Tel. 03-456 81 33, Telefax 03-457 53 13 **Mexico** Tlalnepantla Tel. 565-00-33/565-66-44, Telefax 556-54-073 **The Netherlands** Rotterdam Tel. 010-407 89 11, Telefax 010-456 38 86 **Norway** Oslo Tel. 02-35 20 10, Telefax 02-37 74 23 **Portugal** Lisbon Tel. 1-68 41 94, Telefax 1-69 17 71 **Singapore** Tel. 02-265 26 77, Telefax 02-265 20 04 **Spain** Madrid Tel. 1-571 41 41, Telefax 1-455 61 87 **Sweden** Västerås Tel. 021-10 90 00, Telefax 021-11 93 48 **Switzerland** Baden Tel. 056-76 84 11, Telefax 056-76 85 07 **Thailand** Bangkok Tel. 02-258 03 79, Telefax 02-258 54 31 **United Kingdom** Manchester Tel. 061-437 52 90, Telefax 061-499 07 30 **U.S.A.** Milwaukee Tel. (414) 785-32 00, Telefax (414) 784-97 79, Brewster Tel. (914) 278-68 10, Telefax (914) 278-68 41 **Venezuela** Caracas Tel. 02-241 51 56, Telefax 02-241 38

Specifications subject to change without notice

A07-6088E