

## TESSELATOR 7800/7805



The display system at the heart of the process

**ABB**  
ASEA BROWN BOVERI



## Control close to the process

The ABB Tesselator is now moving outside the control room. You cannot get nearer the process than this. With ABB Tesselator your process supervision becomes more flexible and efficient.

The Tesselator 7800/7805 works in two ways. Firstly, as a separate independent display system for supervision and control of small processes. Secondly, as a local control system, for individual process sections, integrated within a larger distributed system.

In both cases you acquire an excellent instrument which gives you improved control, increased reliability and the best ergonomics.

Simplicity, speed and reliability are the hallmarks of the entire Tesselator concept. It even starts at installation. No video amplification and no coaxial cables are required. All communication is asynchronous.

Simplicity, speed and reliability continue.

### Hardware

In the ABB Tesselator we use high technology combined with simple mechanical design. This gives extremely high reliability and simplified service requirements. All the electronic components are mounted in the display unit.



## Visible advantages

The Tesselator 7800/7805 gives a good picture of your reality. It describes and visualises your process in a way no other display system can.

### Simplicity

It normally takes a long time to build up process pictures. Several months is not unusual. Tesselator has considerably simplified and reduced the time it takes to compose a picture. You do so directly from the keyboard with a number of editing functions.

The Tesselator 7800/7805 offers you almost limitless resources with which to create your pictures.

### Speed

The system is made up of symbols. As opposed to other systems each symbol, regardless of size and shape, is represented by one single code. This means that Tesselator pictures require much less space in your host computer. The amount of data to be transmitted is greatly reduced and you therefore obtain faster communication between the host computer and the display system.

Static pictures are stored locally in the system and this gives shorter response times and faster picture frequency.

### Reliability

Production stops and disturbances in the process are extremely expensive. Great demands are therefore placed on both the operator and the supervision system. ABB Tesselator represents an overall view of the interplay between man and machine. To aid him in his work the operator has an instrument with the very best qualities giving him the greatest possible reliability.



## Paint your own process

With the Tesselator 7800/7805 you have every possibility of creating an accurate and clear representation of your process. You have plenty of building blocks. Different text and symbol sizes, blink functions, display of dynamic information in the form of trend curves, histograms, bar graphs, the opportunity to rapidly change from overall to detailed pictures etc. You have an entire "paintbox" at your disposal. You can paint with the correct colors which arise in the process. The paintbox contains a palette with 512 different colors. You can choose 16 diffe-

rent foreground and 8 individual background colors for each process picture.

With your Tesselator it will be easier to recognise the different parts of the process. It will become easier to supervise and control.

High readability is ergonomically sound. The process pictures in the ABB Tesselator are clear and lucid. ABB Tesselator - the very best process supervision with a reliability which gives higher productivity and security.

### Functions

- Four writing directions

- Five symbol sizes
- 64 background colors with two intensities
- 8 individual background colors
- 16 foreground colors (512 colors to choose from)
- Four blink functions
- Various line thickness
- Trend graphs
- Histograms
- Bar graphs
- Menu handling
- Communications parameters set via the keyboard
- Local picture storage
- Scroll (also in window)
- Plus a number of functions to simplify display design

## Data

### Input power

90-138 VAC, 45-65Hz  
184-265 VAC, 45-65Hz

### Power consumption

Max 130 W

### Processor

Motorola 68008, 10 MHz

### Communications

Asynchronous: Point-to-point  
2 channels  
Tesselator 7800  
3 channels  
Tesselator 7805

#### Tesselator 7800/7805

Computer  
Data link: RS 232C (V.24) or  
KM-1 modem  
15m (RS 232C)  
900 m (KM-1) at  
9.6 kbit/s

Data format: 8 bits  
Selectable speeds: 1200, 1400,  
4800, 9600 and  
19200 bits/s

Parity: Odd, even or none  
Data link protocol: ADLP-10

Keyboard  
Data link: RS 232C (V.24)  
Max distance: 15 m  
Data format: 8 bits  
Speed: 4800 bits/s  
Parity: Even

Tesselator 7805  
Hardcopy  
Data link: RS 232C (V.24)  
Max. distance: 15 m  
Data format: 8 bits  
Speed: 9600 bits/s  
Parity: None

### CRT

Size: 16"  
Gun: In-line  
Dot pitch: 0,31 mm

### VDU controller

Based on custom LSI

### Picture data

Size: 350×262 mm  
Tessel: 112×240  
(vertical×horizontal)  
Pixel: 336×720  
(vertical×horizontal)  
Characters: Up to 56 lines ×  
120 columns

### Frame rate

61 Hz, non-interlaced

### External monitor

Video signals: RS 170, RGB  
Negative sync.  
Max distance: 50 m, 150 ft

### Colors and blink

A choice of two formats via menu handling:

1. 16 foreground colors  
1 blink function (on/off)  
8 local background colors
2. 16 foreground colors  
3 blink functions  
4 local background colors

#### Foreground colors

- Selected via menu handling from a palette of 512 colors.

#### Blink functions

- Rapid, non symmetric and twocolor blink.  
- Each foreground color can be defined with multi-phase blink.

#### Local background colors

- Selected via menu handling from a palette of 512 colors.

General background colors  
- 64 colors with two intensities.

### Cursors

Two independent cursors, visible and computer cursor.

### Analog pictures

Up to 16 trend graphs and an unlimited number of analog indicators (bargraphs type) can be shown simultaneously.

### Symbols

Up to 896 symbols.  
Customer defined symbols are possible.  
Standard symbol set:  
- 5 sizes of alphanumerical characters  
Various language versions available  
- 3 sizes of industrial/ electrical symbols

### Local display storage

Up to 100 pictures can be stored in a 90 kbyte RWM.

### Dim function

To reduce the light intensity on the screen (50%).

### Fields

Unlimited number of computer and operator fields.

### Area protection

Any area on the screen can be protected.

### Dimensions

Size (W×H×D): 459×380×453 mm  
Weight: 26 kg

### Environmental data

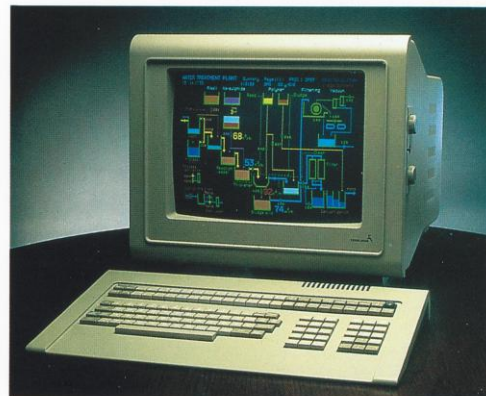
Temperatures,  
operating: +5 to +40°C  
storage: -40 to +55°C  
Relative humidity: 10-80%

### MTBF

Picture tube: 15.000 hours at zero beam current (dark picture), cathode current and high voltage on 30.000 hours at 50°C  
Electronics: 30.000 hours at 50°C

### Peripheral equipment

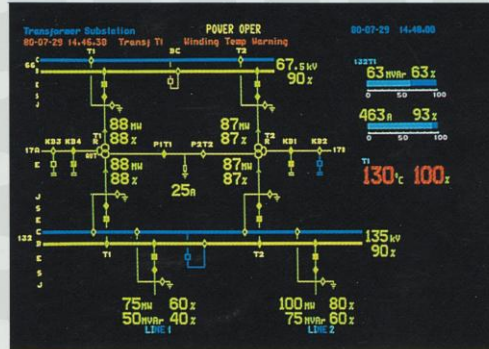
Keyboard: DSIH 70, display design keyboard  
Keyboard: DSIH 70F, operators keyboard  
Keyboard: DSIH 90, customer programmable keyboard  
Trackball: DSIH 71  
Hardcopy: DSEP 4544 7 color (4 ribboned) or other types with JX80 protocol (Tesselator 7805)  
Monitor: DSIM 2619, 16"  
Monitor: DSIM 2919, 20"



# ABB Tesselator is your process window



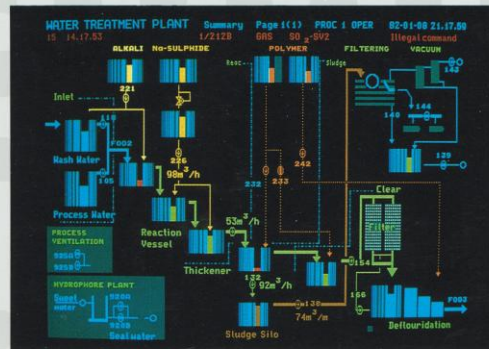
88611



800752



840177



870272



ASEA BROWN BOVERI

Asea Brown Boveri is a world leader in electrical engineering comprising 200 000 employees, some 800 companies operating in 140 countries. The main business segments are power plants, power transmission, power distribution and industrial equipment. Access to modern control and supervision systems like ABB Master is of strategic importance to the group in deliveries to customers in these segments.

Business area ABB Process Automation, which belongs to the industrial equipment segment, designs, manufactures and markets ABB Master as well as systems for industrial force measurement and complete electrical equipment for industrial plants.

**Argentina** Buenos Aires Tel. 311.5386/311.7307/311.1693, Telefax 1 111 952 **Australia** Melbourne Tel. 03-735 72 22, Telefax 03-735 31 87 **Austria** Vienna Tel. 0222-601 09, Telefax 0222-604 37 25 **Belgium** Brussels Tel. 02-721 20 31, Telefax 02-721 44 28 **Brazil** Sao Paulo Tel. 011-577 89 44, Telefax 011-579 73 38 **Canada** Montreal Tel. 514-332 53 50, Telefax 514-332 06 09 **China** Beijing Tel. 1-500 44 41, Telefax 1-500 31 17 **Denmark** Odense Tel. 66-14 70 08, Telefax 66-12 09 89; Ballerup Tel. 42-97 22 44, Telefax 42-97 60 44 **Finland** Helsinki Tel. 90-506 91 Telefax 90-506 92 59 **France** Villefranche-Saone Cedex Tel. 74-62 28 92, Telefax 74-62 28 41 **Federal Republic of Germany (FRG)** Mannheim Tel. 0621-388 01, Telefax 0621-388 25 01, Düsseldorf Tel. 0211-500 70, Telefax 0211-500 71 11 **India** Bangalore Tel. 0812-39 41 72/39 51 81, Telefax 0812-74 14 7 **Italy** Milan Tel. 02-26 23 21, Telefax 02-26 23 26 44 **Japan** Tokyo Tel. 03-436 62 21, Telefax 03-436 63 23 **Malaysia** Kuala Lumpur Tel. 03-456 81 33, Telefax 03-457 53 13 **Mexico** Tlalnepantla Tel. 565-00-33/565-66-44, Telefax 556-54-073 **The Netherlands** Rotterdam Tel. 010-407 89 11, Telefax 010-456 38 86 **Norway** Oslo Tel. 02-35 20 10, Telefax 02-37 74 23 **Portugal** Lisbon Tel. 1-68 41 94, Telefax 1-69 17 71 **Singapore** Tel. 02-265 26 77, Telefax 02-265 20 04 **Spain** Madrid Tel. 1-571 41 41, Telefax 1-455 61 87 **Sweden** Västerås Tel. 021-10 90 00, Telefax 021-11 93 48 **Switzerland** Baden Tel. 056-76 84 11, Telefax 056-76 85 07 **Thailand** Bangkok Tel. 02-258 03 79, Telefax 02-258 54 31 **United Kingdom** Manchester Tel. 061-437 52 90, Telefax 061-499 07 30 **U.S.A.** Milwaukee Tel. (414) 785-32 00, Telefax (414) 784-97 79, Brewster Tel. (914) 278-68 10, Telefax (914) 278-68 41 **Venezuela** Caracas Tel. 02-241 51 56, Telefax 02-241 38

Specifications subject to change without notice

A07-6020E